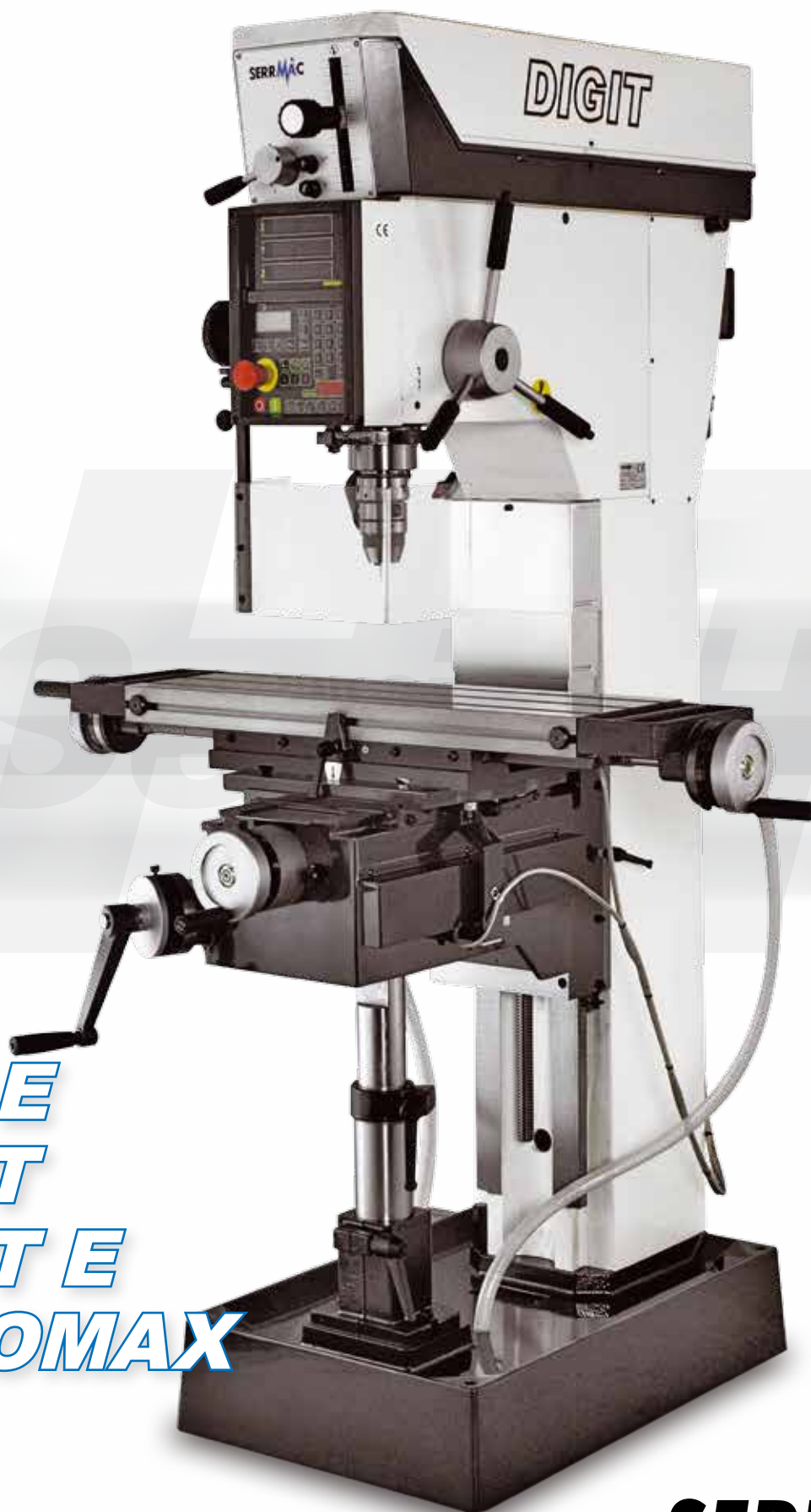


SerieHT

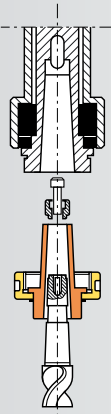


TCS
TCS E
DIGIT
DIGIT E
AUTOMAX



SERRMAC
Still an Italian engineering history

Threaded quill nose
for tool fitting MT 4



M60 x 2,5



Standard: Automatic
mechanical quill-feed



TR: 800 x 360 mm
Rectangular table with rack



TC: 800 x 255 mm
Cross table

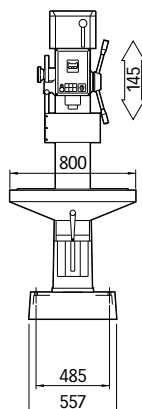
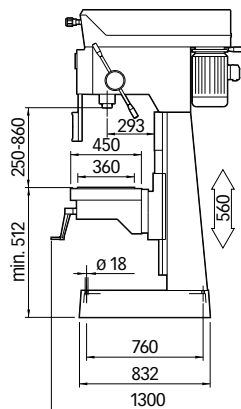


VARIABLES

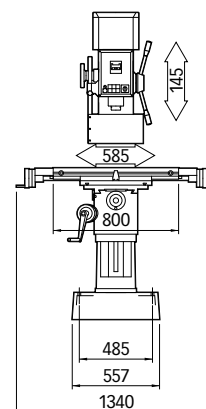
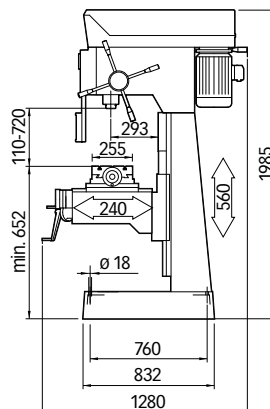
SERRMAC

CE  MADE IN ITALY

TR



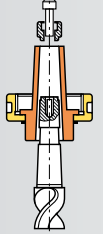
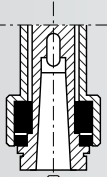
TC



Inverter



Threaded quill nose for tool fitting MT 4



M60 x 2,5



Standard: Frontale Digitale



TR: 800 x 360 mm
Rectangular table with rack



TC: 800 x 255 mm
Cross table



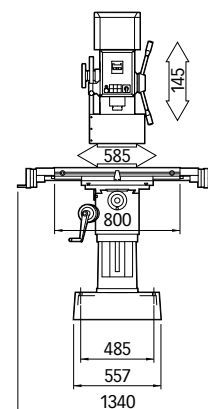
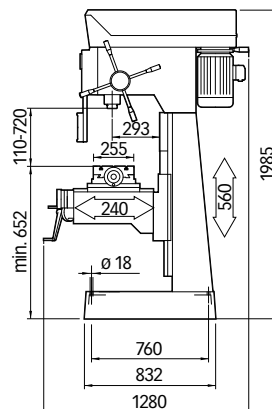
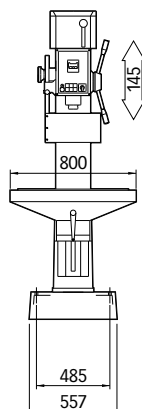
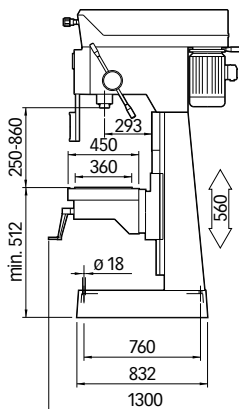
VARIABLES

SERRMAC

CE  MADE IN ITALY

TR

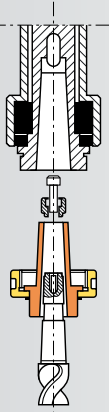
TC



DIGIT

Series High Drilling-Milling machine with 3 visualized axes and programmable manual machining cycle

Threaded quill nose
for tool fitting MT 4



M60 x 2,5



Standard: Automatic
electromagnetic quill-feed



Standard: Integrated
visualizer for cycles



TC: 800 x 255 mm
Cross table

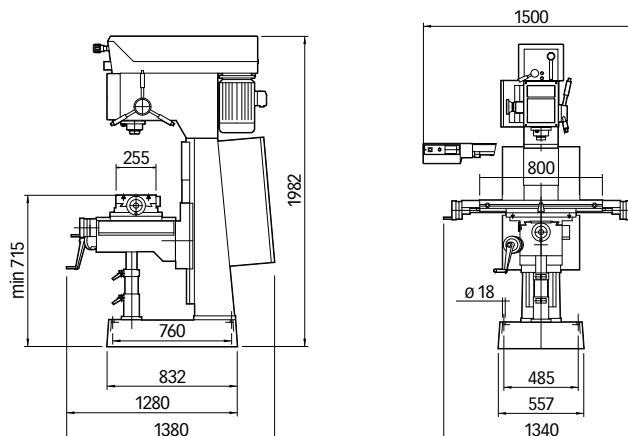


VARIABLES

SERRMAC

CE  MADE IN ITALY

TC

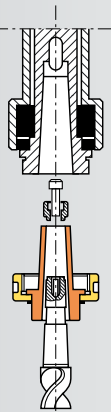


DIGIT E

Series High Tech Drilling Milling Machine with 3 visualized axes and programmable manual machining cycle with variable electronic speed drives by means of inverters.



Threaded quill nose for tool fitting MT 4



Standard: Automatic electromagnetic quill-feed



Standard: Display per visualizzazione e programmazione



TC: 800 x 255 mm
Cross table

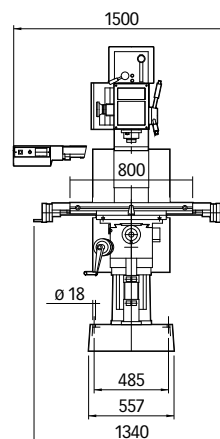
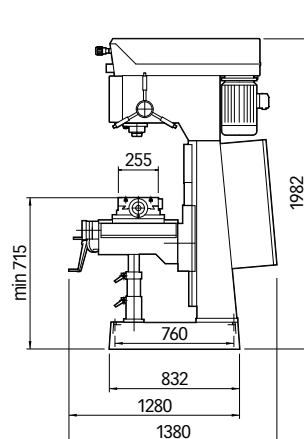


VARIABLES

SERRMAC

CE  MADE IN ITALY

TC



AUTOMAX

Series High Tech Drilling-Milling machine with 3 visualized axes and programmable machining cycles



Standard: Integrated visualizer for setting and loading cycles



TR: 800 x 360 mm
Rectangular table



TC: 800 x 255 mm
Cross table



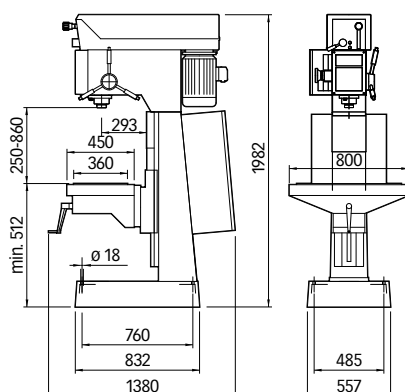
TCu: 800 x 255 mm
Cradle cross table

VARIABLES

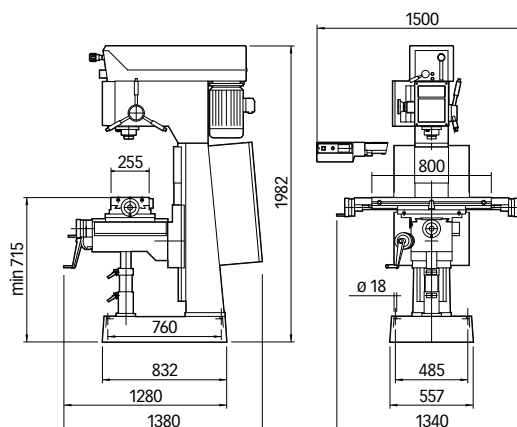
SERRMAC

CE  MADE IN ITALY

TR (Z axis visualized)



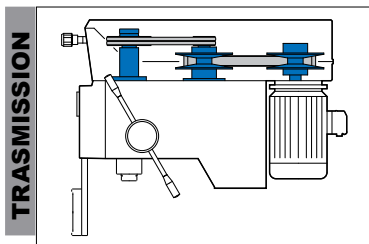
TC (X-Y-Z axes visualized)



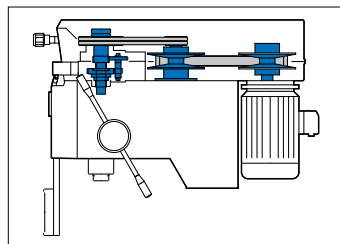
SerieHT

		TCS			DIGIT		AUTOMAX		
TECHNICAL DATA	Drilling capacity on R50 steel	mm	ø 50			ø 50		ø 50	
	Tapping capacity on R50 steel	mm	M 26			M 26		M 26	
	Spindle-taper		CM4			CM4		CM4	
	Quill-stroke	mm	145			145		145	
	Spindle -quill diameter	mm	72			72		72	
	Automatic mechanical quill-feed	mm/giro	3 speeds:: 0.05 – 0.1 – 0.2						
	Automatic electromagnetic quill-feed		3 speeds:: 0.05 – 0.1 – 0.2 rpm						
	Column		Prismatic						
	Table		TR – TC – TCu			TC – TCu		TR – TC – TCu	
	Transmission		VS	VR	CI	VS	VR	VS	VR
Spindle speed	rpm	100 – 1.620	*64 – 2.340	50 – 1.300	100 – 1.620	32 – 2.340	100 – 1.620	32 – 2.340	
Motor power (380 V – 50 Hz)	kW	2.2 – 3	2.2	2.2 – 3	2.2 – 3		2.2 – 3		
Interaxis (between 2 "T-slots" (TR)	mm	180			–		180		
Interaxis (between 3 "T-slots" (TC=TCu)	mm	80			80		80		
"T" slots dimension	mm	14			14		14		
Cross table longitudinal stroke X axis (manual feed)	mm	585			585		585		
Cross table longitudinal stroke X axis (automatic feed)	mm	520			520		520		
Cross table transversal stroke Y axis (manual feed)	mm	240			240		240		
Column model dimensions (h x l x d)	mm	1.986 x 1.340 x 1.280			1.986 x 675 x 1.100		1.986 x 1.340 x 1.280		
Weight	Kg	660 (TR) – 780 (TC) – 800 (TCu)			780 (TC) – 800 (TCu)		660 (TR) – 780 (TC) – 800 (TCu)		

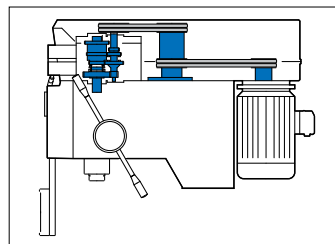
* TCS VR optio: motor 2.2/3 kW – 32/2.340 rpm



VS: Variable speed-drive unit



VR: Variable speed-drive unit with gear box



CI: Gear-box drive-unit.



VS: Variable speed-drive unit.

TRANSMISSION

SerieHT

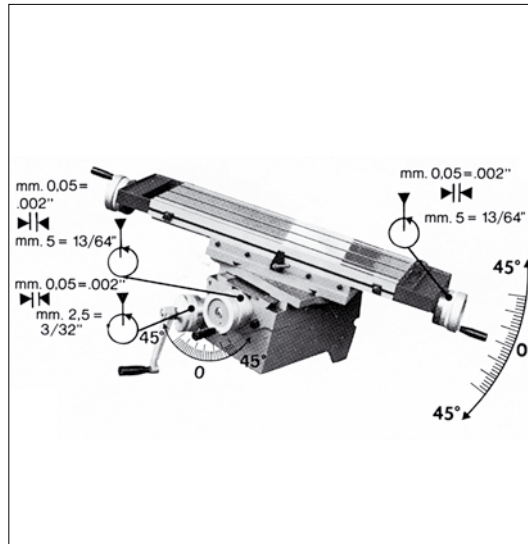
		TCS E	DIGIT E	
TECHNICAL DATA	Drilling capacity on R50 steel	mm	∅ 50	
	Tapping capacity on R50 steel	mm	M 26	
	Spindle-taper		CM4	
	Quill-stroke	mm	145	
	Spindle -quill diameter	mm	72	
	Automatic mechanical quill-feed	mm/giro	3 speeds: 0.05 – 0.1 – 0.2	
	Automatic electromagnetic quill-feed		3 speeds: 0.05 – 0.1 – 0.2 rpm	
	Column		Prismatic	
	Table		TR – TC	TC
	Transmission		Inverter	Inverter
	Spindle speed	rpm	15 - 2150	45 - 900 / 110 - 2150
	Motor power (380 V – 50 Hz)	kW	3	3
	Interaxis (between 2 "T-slots" (TR)	mm	180	–
	Interaxis (between 3 "T-slots" (TC=TCu)	mm	80	80
	"T" slots dimension	mm	14	14
	Cross table longitudinal stroke X axis (manual feed)	mm	585	585
Cross table longitudinal stroke X axis (automatic feed)	mm	520	520	
Cross table transversal stroke Y axis (manual feed)	mm	240	240	
Column model dimensions (h x l x d)	mm	1.986 x 1.340 x 1.280	1.986 x 675 x 1.100	
Weight	Kg	660 (TR) – 780 (TC)	780 (TC)	



VR: Variable speed-drive unit with gear box.



CI: Gear-box drive-unit



TC: Cross table

OPTIONS



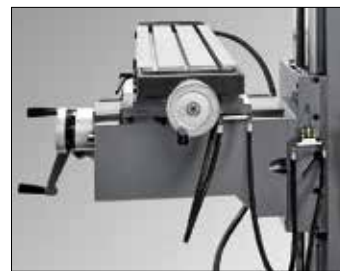
Cod. 40022: 24 Volts LED light.



Cod. 40002: Thread-cutting unit with 24 V transformer.



Cod. 40024: Digital speed counter



Cod. 40007: Centralized system for guide lubrication.



Cod. 5355351: Chip and drip collecting tray for TCS.



Cod. 40005: Electronic longitudinal cross-table feed for TC 36÷380 mm/min. Rapid/feed 3 m/min.



Cod. 40006: Rapid vertical table feed



Cod. 40026 Power: Mechanical longitudinal cross-table feed.



Cod. 40097: ISO 40 Spindle shaft with hydraulic lock and release system



Cod. 40008: Telescopic support



Cod. 40083: 24V Dc Electro magnetic automatic quill-feed



Cod. 40025: Read-out system for 2 axes.



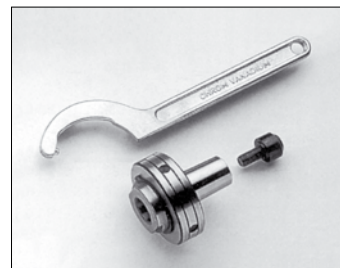
Cod. 40001: 230 mm long sleeve (only with VS)



Cod. 40020: ISO 40 (DIN 2080) spindle including tie-rod.



Cod. 40037: Drilled spindle axis MT4 for tie-rod.



Cod. 39000050/60/70: Adaptor with locking ring nut for slot end-mills MT1 – MT2 – MT3 upon request



Cod. 39000010/20/30/40: Adaptor with locking ring nut for face-mills attachments on request dia. 16-22-27-32

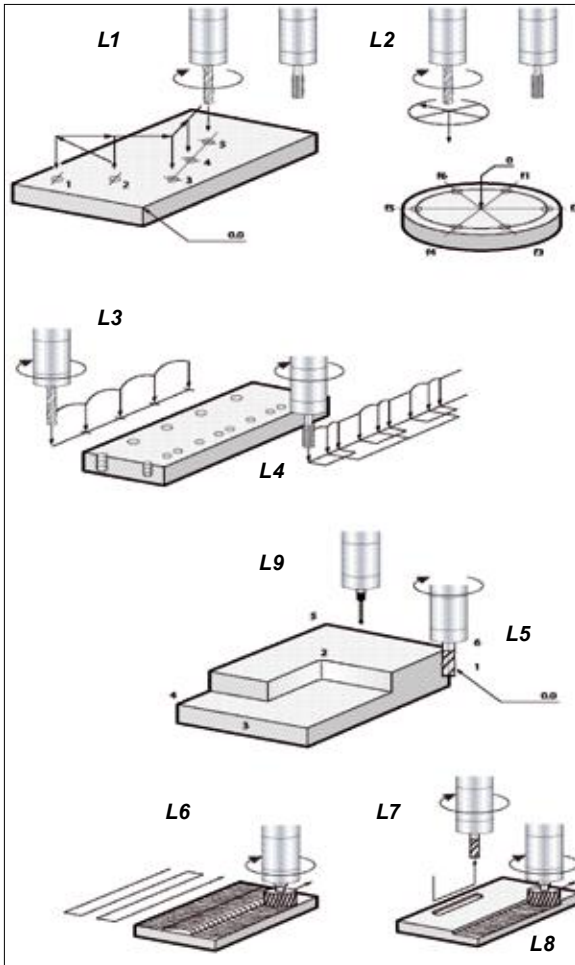


Cod. 9460009: Box with MT4 collet-chuck and dia. 4-6-8-10-12-16-20 collets



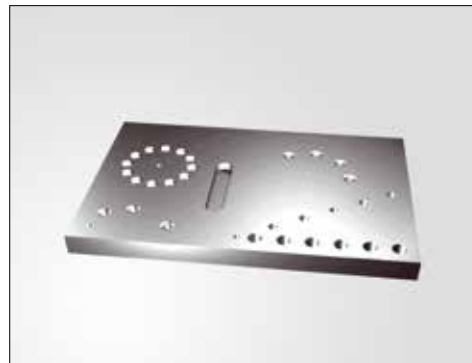
Cod. 9459210 (CM4) – Cod. 9459212 (ISO 40): Box containing taper shanks for end and face-mills, gripper-carrying spindle for 4-20 dia. mm drills, 70 dia. mm boring head with MT4 taper, ISO 40 taper.

DIGIT

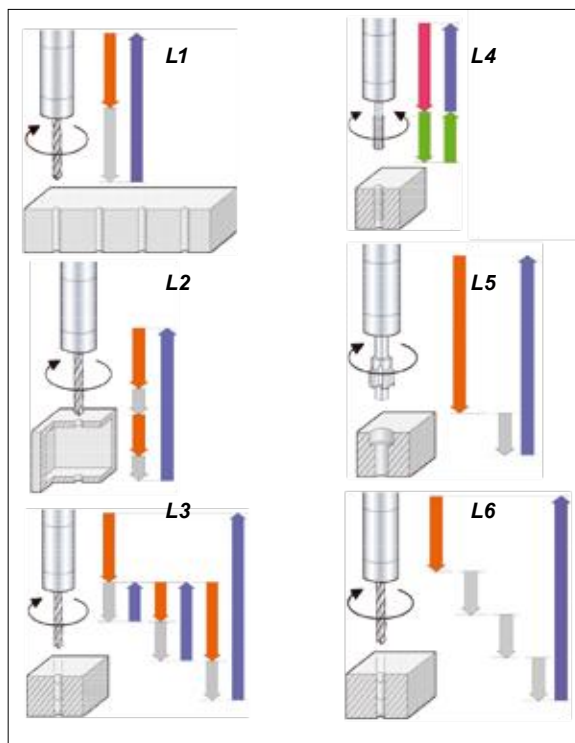


- L2= series of holes on a circle arc
- L3 = drilling/tapping with steady pace
- LV = drilling/tapping with variable pace
- L5= heavy milling
- L6= finishing process
- L7 = milling of pockets – keys
- L8= milling of shoulders
- L9 = search for O point and check of the measure

Manufacturing which can be done with DIGIT

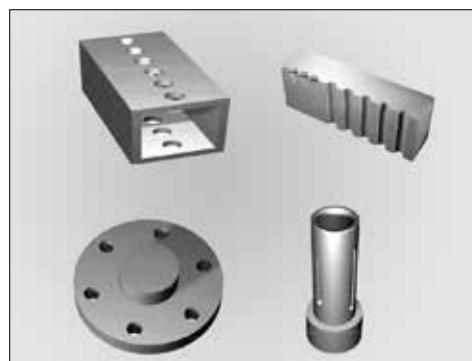


AUTOMAX



- Progress of work
 - Rapid progress
 - Fast return
 - Tapping
 - Manual way down
- L1= Drilling
 - L2= Drilling with fast mid-term
 - L3= Drilling with drain of wood-shavings
 - L4= Tapping
 - L5= Time -locked fine-tuning
 - L6= Deep-hole drilling

Manufacturing which can be done with AUTOMAX





SERRMAC INTERNATIONAL S.r.l.
Via delle Industrie, 9 - 33070 Polcenigo (PN) - ITALY
Tel. +39 0434 671021 · Fax +39 0434 671031
info@serrmac.it
www.serrmac.it



Official dealer